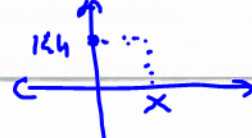


## ALİŞTIRMALAR



1.  $f(x) = x^2$  fonksiyonunun grafiğinde y ekseninde 144 noktasına x ekseninde hangi nokta karşılık gelir?

$$f(x) = 144 = x^2 \quad x = 12$$

- A) 9      B) 10      C) 11      D) 12      E) 44

2.  $A = \{1, 2, 3\}$ ,  $B = \{5, 6, 7, 8\}$ , ve  $f: A \rightarrow B$  olmak üzere Aşağıdakilerden hangisi bire bir fonksiyon ifade eder?

A)  $\{(1, 6), (2, 8), (3, 5)\}$

B)  $\{(1, 5), (2, 5), (3, 5)\}$

C)  $\{(1, 8), (2, 8), (3, 5)\}$

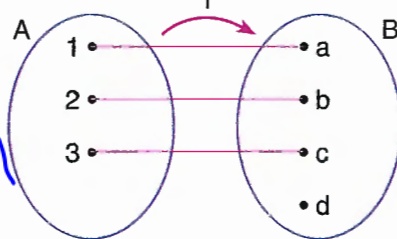
D)  $\{(1, 7), (2, 7), (3, 6)\}$

E)  $\{(1, 5), (2, 6), (3, 6)\}$

$2 \neq 3 \quad f(2) = f(3) = 5$   
 $1 \neq 2 \quad f(1) = f(2) = 7$   
 $2 \neq 3 \quad f(2) = f(3) = 6$

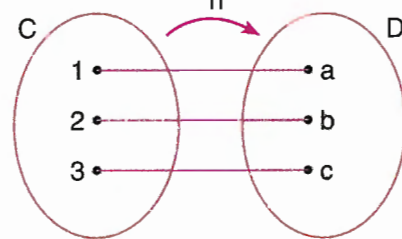
3. Aşağıda belirtilen fonksiyonların bire bir veya örtenliğini ifade ediniz.

A)



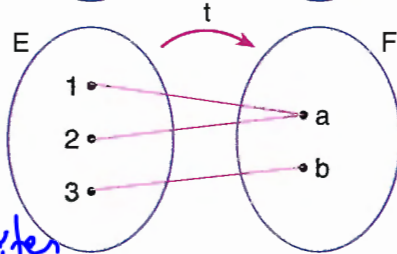
1:1 ama örten değil

B)



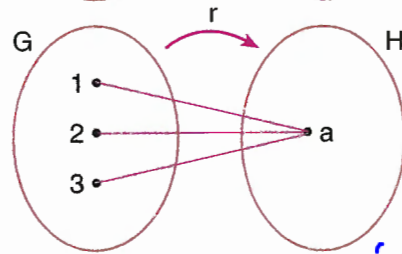
1:1 ve örten

C)



1:1 değil örten

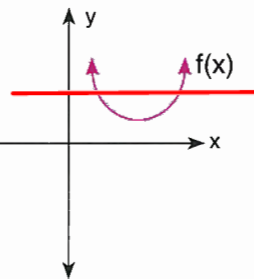
D)



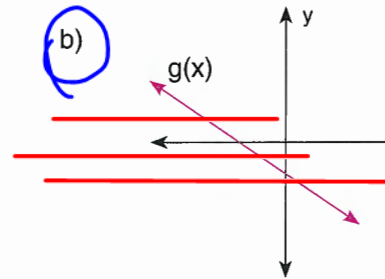
1:1 ve örten

4. Aşağıda grafikleri verilen fonksiyonlardan hangileri bire birdir?

a)

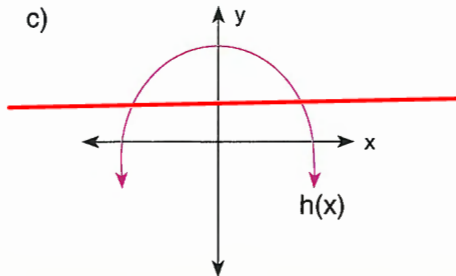


b)



Yatay çizgilerin hepsinde noktadan kesmeli

c)



ç)

