

5. Şekilde $f(x-2)$ fonksiyonunun grafiği verilmiştir.

Buna göre $f(3) + f(1) - f(-5)$ toplamı kaçtır?

$$(5,3), (3,1), (0,0), (-3,-2) \in f(x-2)$$

$$f(3)=3 \quad f(-2)=0$$

$$f(1)=1 \quad f(-5)=-2$$

$$3+1-(-2)=4+2=6$$

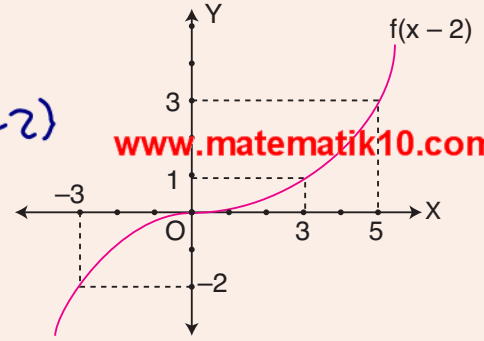
A) 2

B) 3

C) 4

D) 5

E) 6



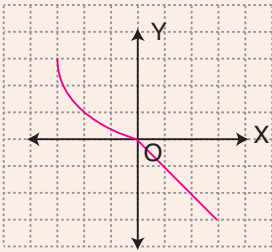
6. $f(x)$ fonksiyonunun grafiği yanda verilen şekildeki gibi olduğuna göre, $-f(-x)$ fonksiyonunun grafiği aşağıdakilerden hangisi olabilir?

$$-f(-x) \quad (x,y) \in f(x)$$

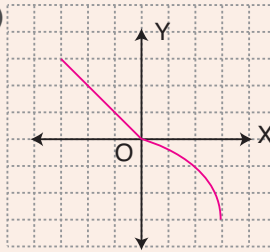
$$\text{ise } (-x, -y) \in f(-x)$$

o rjine göre simetri (önce x'e, sonra y eksi-pare simetri)

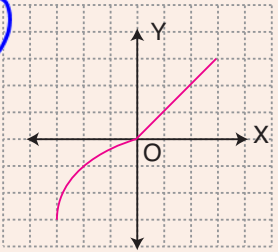
A)



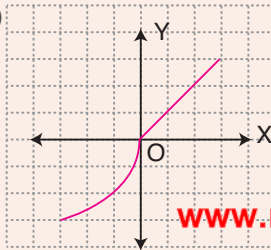
B)



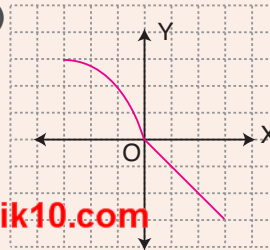
C)



D)



E)



www.matematik10.com

7. Şekilde f ve g fonksiyonlarının grafikleri verilmiştir.

Buna göre, $(f+g)(3) - \left(\frac{f}{g}\right)(0)$ ifadesinin değeri kaçtır?

$$f(3) + g(3) - \frac{f(0)}{g(0)}$$

$$2 + 2 - \frac{0}{-2} = 4$$

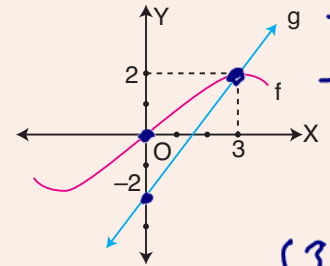
A) 0

B) 1

C) 2

D) 3

E) 4



$$(3,2) \in f(x)$$

$$(0,0) \in f(x)$$

$$f(3)=2$$

$$f(0)=0$$

$$(3,2) \in g(x)$$

$$(0,-2) \in g(x)$$

$$g(3)=2$$

$$g(0)=-2$$